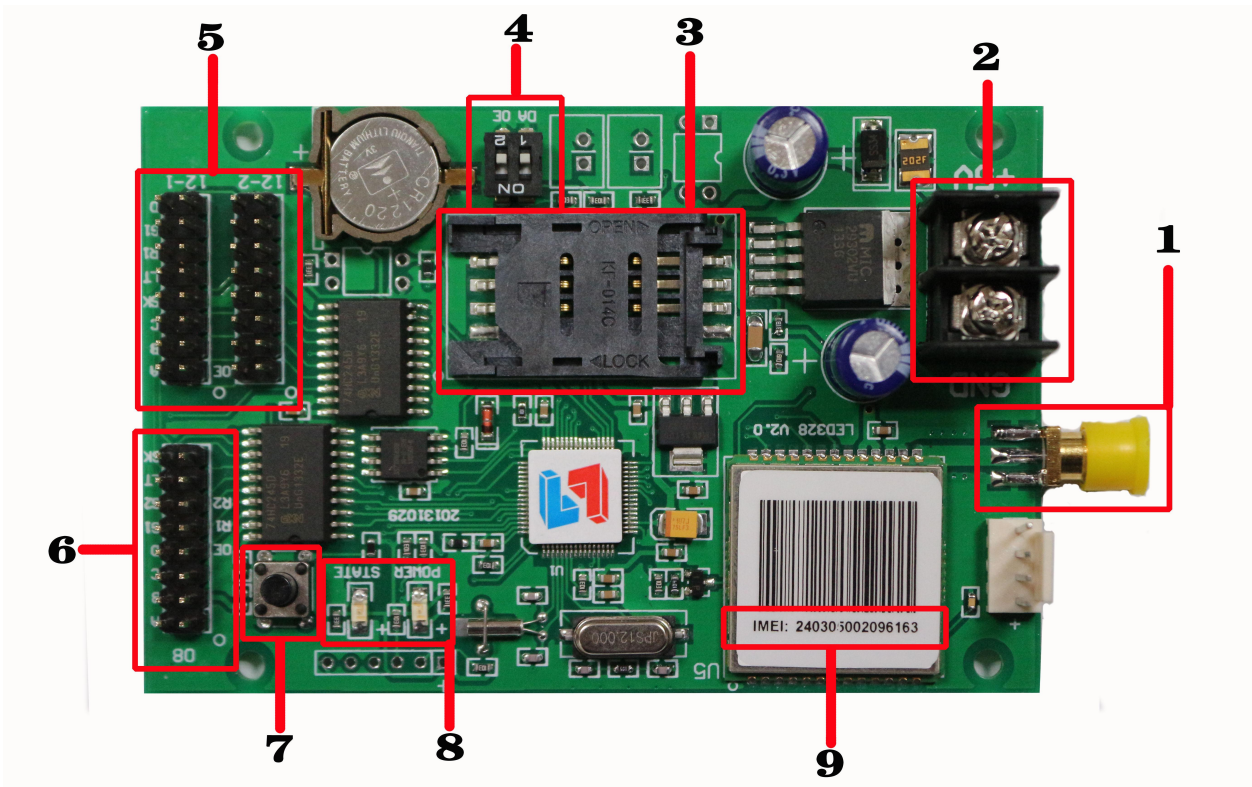


Specification for G2-GPRS Display Controllers

Hardware:



Item	Interface Name	Description
1	GMS antenna interface	Connect to the antenna
2	5V Power supply	Voltage range support 3.5V-6V
3	SIM card slot	Put the SIM card inside tray
4	Dial switch	Adjust the baud-rate
5	HUB12 Port	Connect to modules with HUB12 port
6	HUB08 Port	Connect to modules with HUB08 port
7	Multi-function button	1.Test LED panel 2.Reset to defaults
8	Status indicator	Indicating working state
9	IMEI Number	Same with the terminal number in server

Parameter:

PRODUCT MODEL	G2 GPRS Controller
FOR Screens	3.75,7.62, P10 to P20
PIXEL(Resolution):	Single color 16K, 32(H)*512(W) , Double color 8K ,32(H)*256(W)
COLOR:	RED, GREEN, YELLOW
USAGE	Outdoor, Indoor, Semi-outdoor
Communication Mode	Wireless GPRS
HUB Port No.	1*(HUB08),2*(HUB12)
Software Function	Multi-program/multi-areas' display
Program No.	Support 128 programs,16 areas for each program
Area Type	Text/Image/ digital clock/analogue clock /timer/animation
Frame Mode	Most advanced colorful / magic graphics frame/Area frame
Time Mode	Analogue clock/digital clock; Positive timing and counting-down timer
Date Mode	MM/DD/YY, YYYY-MM-DD, DD/MM/YYYY
Remote control	Remote control by GPRS WEB Server
Brightness Adjustment	Yes
Power on/off Mode	Auto powered on/off and timing powered on
Voltage	5V(3.5V~6.5V)
Maximum power	≤1.5W
Temperature	-40°C~85°C